

Key operated pushbutton

## Technical data

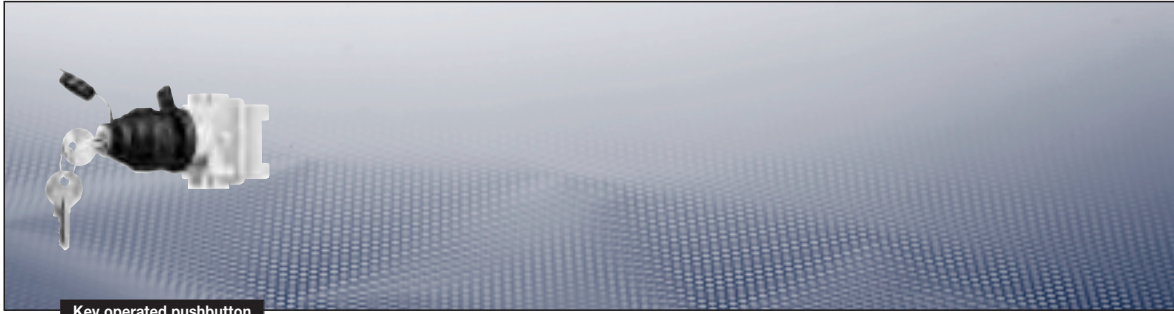
### Ex-Control and signal units for panel mounting

#### Key operated pushbutton Type 418 812

Marking to 94/9/EC	Ⓔ II 2 G Ex ed IIC T6 / Ⓔ I M 2 Ex de I		
EC-Type Examination Certificate	PTB 97 ATEX 1081 U PTB 99 ATEX 1034 <sup>1)</sup>		
Permissible ambient temperature	-20 °C to +40 °C -55 °C to +55 °C (option)		
Rated voltage	500 V AC		
Rated current	16 A		
Rated current gold contacts	0.4 A		
Switch rating	AC 15	250 V/6 A	500 V/4 A
	DC 13	24 V/6 A	60 V/0.8 A    110 V/0.5 A
Connecting terminals	2 x 2.5 mm <sup>2</sup>		
Degree of protection accd. EN 60529	IP66 <sup>1)</sup>		
Dimensions (L x W x H)	approx. 59 x 31 x 45 mm		
Weight	0.15 kg		
Type of mounting	Ø 30.5 mm fixing hole		
Enclosure colour	grey		
Gasket material	Neoprene (Standard), Fluoric silicone or viton on request		
Latch point	CEAG 1 (others on request)		

<sup>1)</sup> If protective covers are used

## Ex-Control and signal units



Key operated pushbutton

### Ordering code for Component (Code 2) Code A - B - C

A	B	C
GHG 418 812	-	R00 -

Code	Component	Code
A	Key operated pushbutton	GHG 41 812

Code	Contact system	Contacts	Code	
			silver contact points	gold contact points
B	2 NC		3	6
	2 NO		4	7
	1 NO + 1 NC		5	8

Code	Function	Pushbutton not pressed	Key	pushbutton pressed	Key	Code
C		lockable	removable	lockable	removable	10
		lockable	removable	lockable	not removable	11
		lockable	removable	not lockable	not removable	12
		lockable	not removable	lockable	removable	13
		not lockable	not removable	lockable	removable	14
		not lockable	removable	auto lockable	removable	15

### Example for ordering code (Code 2)

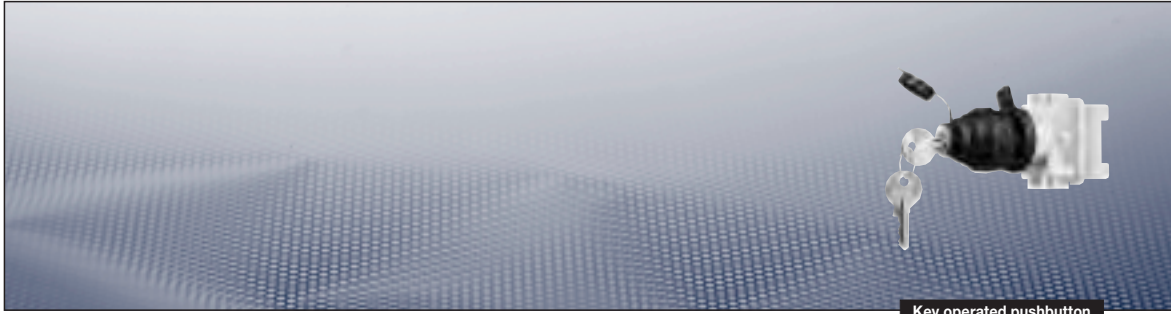
Version	Label		Ordering code		
	pushbutton not pressed	pushbutton pressed	A	B	C
Key switch with silver contact points, without protective cover					
1 NO + 1 NC	lockable	lockable	GHG 418 812	5 R00	10
	Key removable	Key removable			
2 NC	lockable	lockable	GHG 418 812	3 R00	11
	Key removable	Key removable			
2 NO	lockable	not lockable	GHG 418 812	4 R00	12
	Key removable	Key not removable			

Key switch with gold contact points, without protective cover					
1 NO + 1 NC	lockable	lockable	GHG 418 812	8 R00	10
	Key removable	Key removable			
2 NC	lockable	lockable	GHG 418 812	6 R00	11
	Key removable	Key removable			
2 NO	lockable	not lockable	GHG 418 812	7 R00	12
	Key removable	Key not removable			

### Accessories

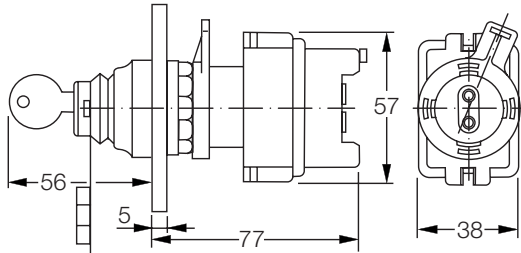
Type	OU	Order No.
Protective cover to meet IP66	5	GHG 410 1939 R0002

Please note that we can only deliver in the ordering units (OU) stated in the tables above

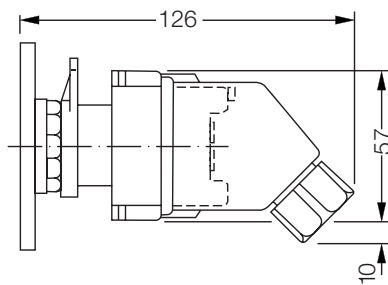


Key operated pushbutton

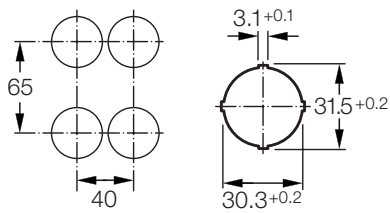
Dimension drawing



Key switch without protective cover



Key switch with protective cover



Minimum distances

Cooper Crouse-Hinds © 2009 - all rights reserved

Dimensions in mm

1  
2  
3  
4  
5  
6  
7  
8  
9  
10  
11  
12