



Type 414 81..

Housing GHG 414 82

Housing GHG 414 81

**Technical data**

**Ex-Control stations Type 414 81 | Type 414 82**

Marking to 94/9/EC	Ⓔ II 2 G Ex ed ib m IIC T6 Ⓔ II 2 D Ex tD A21 IP66 T80 °C
EC-Type Examination Certificate	PTB 00 ATEX 3117
IECEX Certificate of conformity	IECEX BKI 04.0003
Marking accd. to IECEx	Ex e II T6, Ex e ib IIC T6, Ec ed IIC T6 or Ex ed ib IIC T6
Permissible ambient temperature	-20 °C to +40 °C -55 °C to +55 °C (option)
Rated voltage	690 V AC (with control switch GHG 23 to 500 V)
Rated current	16 A (with control switch GHG 23 max. 10 A)
Switch rating control switch GHG 23	AC 15: 230 V/10 A / 500 V/6 A DC 13: 24 V/ 2 A / 230 V/0.4 A with gold contact points max. 0.4 A
Connecting terminals	2 x 4 mm <sup>2</sup>
Insulation class	I
Degree of protection accd. EN 60529	IP66 (standard) IP65 (measuring instrument AM45, double pushbutton)
Cable glands/Gland plates/Enclosure drilling	1 x drilling Ø 21 mm for cable gland M20
Enclosure material	Stainless steel AISI 316 L

**Type 414 81**

Dimensions (L x W x H)	166 x 140 x 76 mm
Weight (empty)	1.40 kg

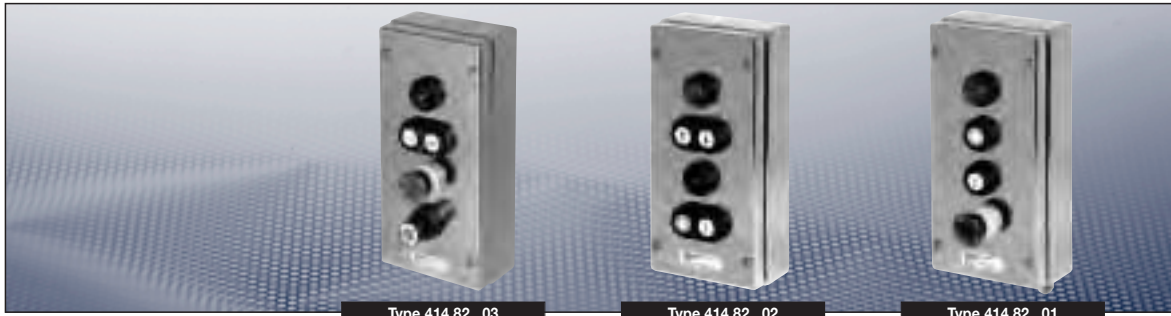
**Type 414 82**

Dimensions (L x W x H)	286 x 140 x 76 mm
Weight (empty)	2.10 kg

**Type 414 81 with measuring instrument AM 72**

	Moving iron	Moving coil
Marking to 94/9/EC	Ⓔ II G EEx e II	Ⓔ II G EEx ib IIC
Accuracy	Class 2.5	Class 1.5
Overload range	10-fold -25 sec. 25-fold - 4 sec. 50-fold - 1 sec. indicated 1:1.5	10-fold -5 sec.
Measuring range	n / 1A 0 - 25 A direct	0 - 20 mA 4 - 20 mA
Li	-	max. 0.1 mH
Ci	-	max. 0.1 nF
Ui	-	max. 30 V
Ii	-	max. 150 mA
Connecting terminals	2 x 1.5 - 4 mm <sup>2</sup>	
Weight	1.25 kg	

<sup>1)</sup> Base enclosure can be rotated afterwards (entry from top or down)  
Other versions available on request

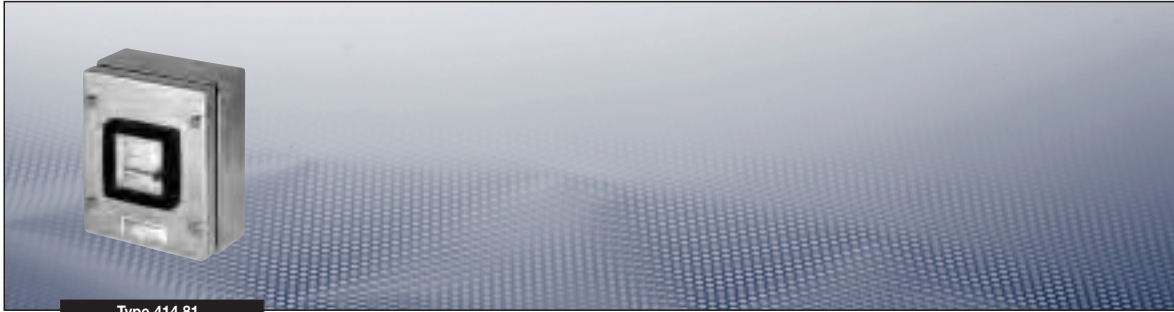


**Ordering details type 414 82 with 4 built-in components**

Version*	Built-in components	Weight approx.	Order No.
<p>X1 ⊗ X2</p>	<p>1 x signal lamp SIL 20-250 V AC/DC coloured lens cover: "white, red, green, yellow" 2 x pushbutton DRT 1 NO + 1 NC label: "0, I, START, STOP" 1 x mushroom-head pushbutton SGTE 1 NO + 1 NC "Emergency stop"</p>	2.80 kg	<b>GHG 414 8200 R0001</b>
<p>X1 ⊗ X2</p> <p>X1 ⊗ X2</p>	<p>2 x signal lamp SIL 20-250 V AC/DC coloured lens cover: "white, red, green, yellow" 2 x double pushbutton DDT 1 NO + 1 NC label: "0, I, START, STOP"</p>	2.80 kg	<b>GHG 414 8200 R0002</b>
<p>X1 ⊗ X2</p>	<p>1 x signal lamp SIL 20-250 V AC/DC coloured lens cover: "white, red, green, yellow" 1 x double pushbutton DDT 1 NO + 1 NC label: "0, I, START, STOP" 1 x mushroom-head pushbutton SGTE 1 NO + 1 NC "Emergency stop" 1 x key-operated switch 2 NO SW 5 "engaging-engaging-engaging" label: "I 0 II"</p>	2.90 kg	<b>GHG 414 8200 R0003</b>

\*Without external fixing lugs (see accessories page 9.30)

## Ex-control stations



Type 414 81..

### Ordering details type 414 81 with measuring AM72

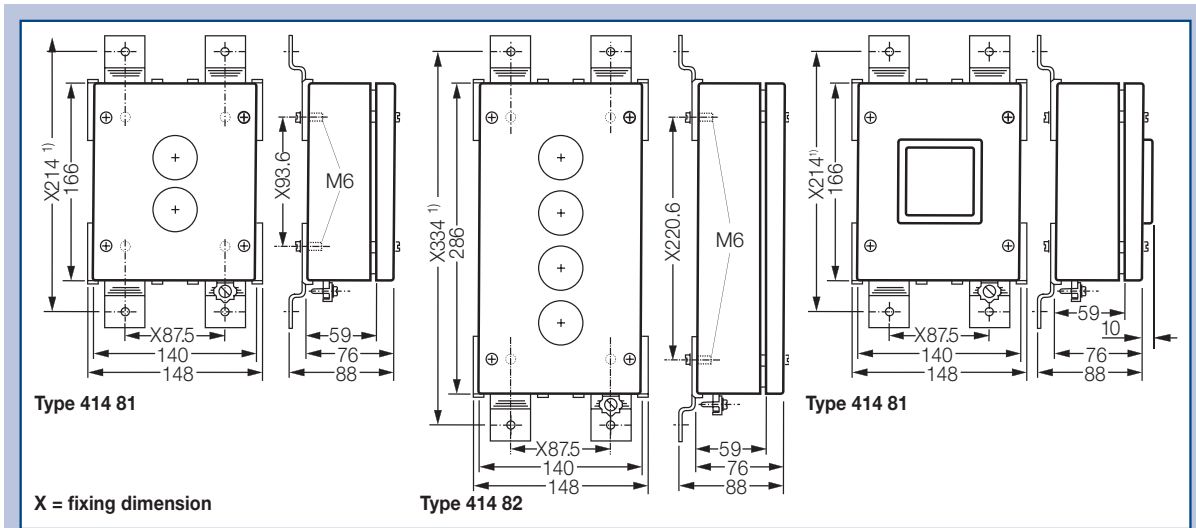
Version	Weight approx.	Order No.
Version direct measurement with 1 x threaded entry $\varnothing$ 21 mm (without external fixing lugs)		
0 - 1 / 1.5 A	1.25 kg	<b>GHG 414 8181 R0002</b>
0 - 2.5 / 3.75 A	1.25 kg	<b>GHG 414 8181 R0003</b>
0 - 5 / 7.5 A	1.25 kg	<b>GHG 414 8181 R0004</b>
0 - 10 / 15 A	1.25 kg	<b>GHG 414 8181 R0005</b>
0 - 16 / 24 A	1.25 kg	<b>GHG 414 8181 R0007</b>
0 - 20 / 24 mA 0-100% / 120% ( $R_i = 320 \Omega$ )	1.35 kg	<b>GHG 414 8181 R0033</b>
4 - 20 / 24 mA 0-100% / 120% ( $R_i = 320 \Omega$ )	1.35 kg	<b>GHG 414 8181 R0035</b>

Version	Weight approx.	Order No.
Version CT connection n/1A with 1 x threaded entry $\varnothing$ 21 mm (without external fixing lugs)		
0 - 1 / 1.5 A	1.25 kg	<b>GHG 414 8182 R0002</b>
0 - 2.5 / 3.75 A	1.25 kg	<b>GHG 414 8182 R0003</b>
0 - 5 / 7.5 A	1.25 kg	<b>GHG 414 8182 R0004</b>
0 - 10 / 15 A	1.25 kg	<b>GHG 414 8182 R0005</b>
0 - 15 / 22.5 A	1.25 kg	<b>GHG 414 8182 R0007</b>
0 - 20 / 30 A	1.25 kg	<b>GHG 414 8182 R0008</b>
0 - 30 / 45 A	1.25 kg	<b>GHG 414 8182 R0009</b>
0 - 40 / 60 A	1.25 kg	<b>GHG 414 8182 R0010</b>
0 - 50 / 75 A	1.25 kg	<b>GHG 414 8182 R0011</b>
0 - 60 / 90 A	1.25 kg	<b>GHG 414 8182 R0012</b>
0 - 75 / 112.5 A	1.25 kg	<b>GHG 414 8182 R0013</b>
0 - 100 / 150 A	1.25 kg	<b>GHG 414 8182 R0014</b>
0 - 100% / 150%	1.25 kg	<b>GHG 414 8182 R0033</b>

### Accessories

Type	Order No.
External fixing lugs (2 pcs)	<b>GHG 610 1941 R0013</b>

### Dimension drawing



<sup>1)</sup> Scope of delivery without fixing lugs

Dimensions in mm